



Final Agenda Announced for Simio Sync24

Register Now for Our Annual User Conference:
March 6-7, 2024



Simio's Annual User Conference is only one month away. This virtual event will span two days: Wednesday March 6th and Thursday March 7th, 2024. Attendance is free and registration is open. Here is the agenda:

Day 1: Wednesday, March 6, 2024

10:00AM EST Demand Driven Institute

Sync24 Keynote Presentation: The Adaptive Enterprise

11:00AM EST Simio

Introduction to the Simio Intelligent Adaptive Process Digital Twin

11:30AM EST Johnson & Johnson Innovative Medicine

End-to-End Supply Chain Design & Optimization using Simulation & Options Modeling

12:30PM EST McKinsey & Company
Optimizing Production Processes with Simulation

1:30PM EST Northrop Grumman
In a Model Far, Far Away

Day 2: Thursday, March 7, 2024

10:00AM EST Simio
Simio 17: What's New In Simio's Upcoming Release

10:30AM EST Simio
Innovate & Scale: A Blueprint for Deploying a Simio Digital Twin Platform

11:30AM EST Low Code Operational Intelligence
The Data Mesh: A New Mentality for Enterprise Data

12:30PM EST Chevron
The Digital Decommissioning Factory

1:30PM EST Penske Truck Leasing
Penske Truck Leasing Operations Capacity Model to Support Company Growth

[Register Now](#)



The Simio Solution Series is Back!

Upcoming Webinars

**Fundamentals of Simio -
Basic Features and How to Use Simio for New Users**

Wednesday, February 14th, 2024 at 11:00AM EST (4:00 UTC)

This session is aimed at new and soon-to-be-new Simio users. We will demonstrate the basic features of Simio and the model-building process by building a model - no idle talk and hand-waving - instead, we'll get knee-deep in Simio by building and running a model, discussing features and answering questions along the way.

[Register Now](#)

Warehouse Modeling Techniques and Best Practices

Thursday, April 18th, 2024 at 11:00AM EST (4:00 UTC)

[Register Now](#)

Counter Element New Feature & Other Elements: Timer, Monitor, etc.

Thursday, May 16th, 2024 at 11:00AM EST (4:00 UTC)

[Register Now](#)

[Watch Previous Webinars](#)

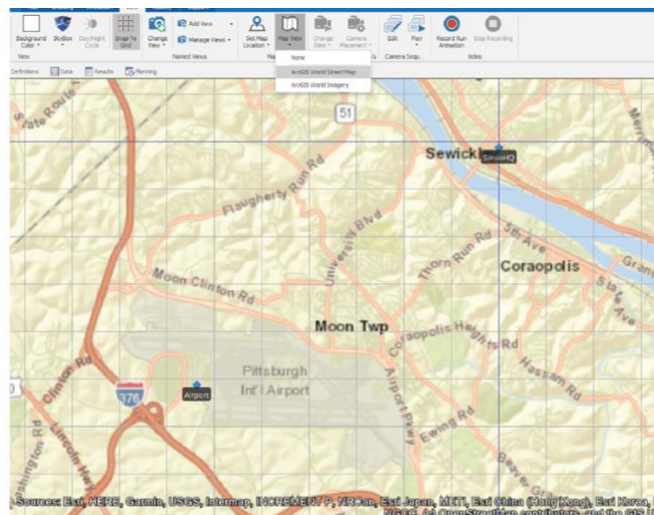
Tips & Tricks from the Simio Team

Add Link Between Points of Interest with Map View

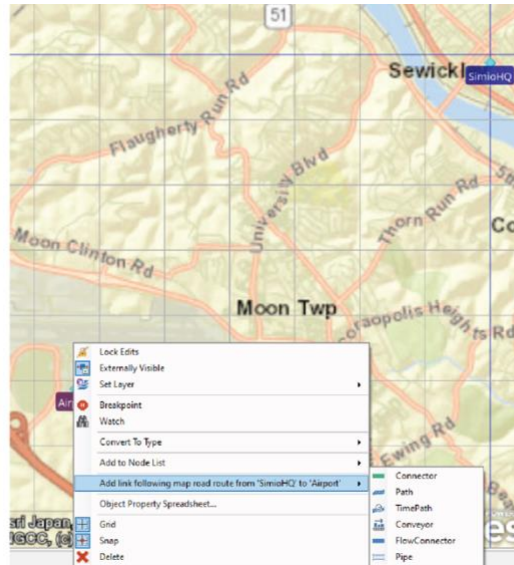
Simio's "ArcGIS World Street Map" function allows users the capability to create Links between Points of Interest that represent feasible means of road transportation, as opposed to a default straight line that would be created otherwise.

Suppose you wanted to build a model that involved traveling from Simio Headquarters to Pittsburgh International Airport.

Using the "ArcGIS World Street Map" function under Map View, you can incorporate a physical map onto your model to give it a more accurate physical representation.

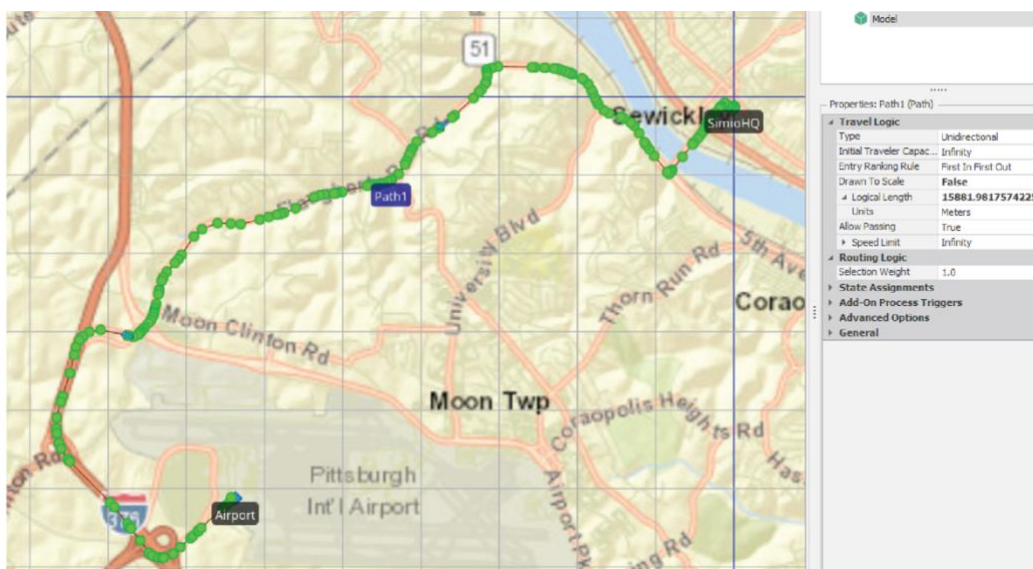


Both locations are represented by Transfer Nodes, select both Nodes, and right-click with your mouse to display a list of options. Choose the highlighted option and a Link will be created that creates a route for Entities to follow using viable roadways.



Using any of the Link options, the Link will be created and the proper Logical Length will populate on the Object. Consider this approach for your logistical modeling needs!

-Contribution from Drew Rose, Simio Solutions Engineer



New Video: Winter Sim Conference Vendor Workshop

Learn More about Building Simio Models and Neural Networks

Watch as our Academic Team develops a Simio Digital Twin model, demystifying the setup process and demonstrating the earliest steps in taking down your operational challenges!

Video 1 (Developing a Baseline Simio Model): [Watch Now](#)

Video 2 (Neural Network Model and Applying it for Decision Making): [Watch Now](#)



Edition: February 2024

Simio LLC, 504 Beaver Street, Sewickley, PA 15143

© 2024 Copyright [Contact](#) [Privacy Policy](#)